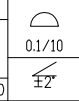


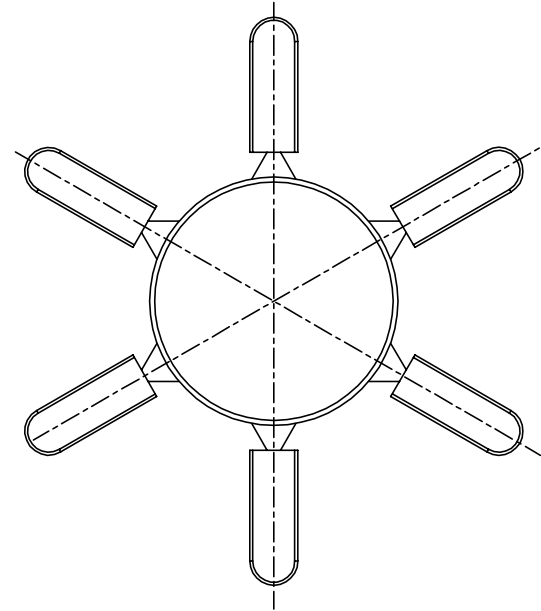
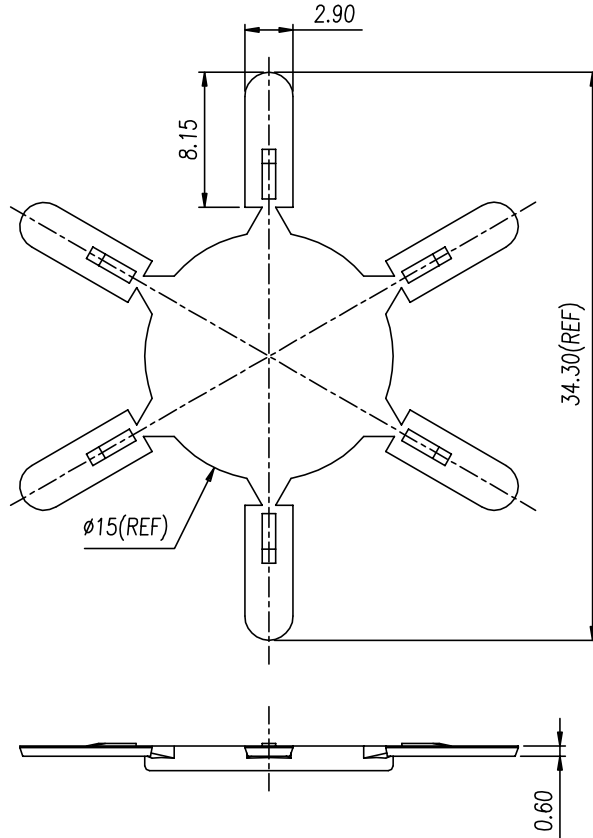
未注公差/General tolerances(mm)													
0	>3	>6	>10	>18	>30	>50	>80	>120	>180	>250	>315	>400	>500
~3	~6	~10	~18	~30	~50	~80	~120	~180	~250	~315	~400	~500	~2.50
±0.12	±0.18	±0.22	±0.26	±0.31	±0.37	±0.57	±0.80	±0.93	±1.05	±1.15	±1.60	±2.20	±2.50



REV	ECN	DESCRIPTION	DRFT	DATE

DB2EPWI — 5.08 — 6P — C
 (Series No.) (Pitch) (Poles)

(Color):GN:(Green), BK:(Black), BU:(Blue), RD:(Red), GY:(Gray)
 OG:(Orange), WT:(White), YL:(Yellow), CR:(Clear)



MAT NO.:	/	Housing	PA66	UL94V-0
STATUS:	/	NAME OF PART	MATERIAL	NOTES
APPD:	MARK 2024.10.26	宁波地博电气有限公司 NINGBO DORABO ELECTRICAL CO., LTD		
CHKD:	MARK 2024.10.26	NAME: DB2EPWI-5.08-6P-OG		
DRFT:	MARK 2024.10.26	DRAWING NO.:		REV MO
④	SIZE: A4	mm (inch)	TYPE: CUSTOMER_DRAWING	SCALE: SHEET 1/1